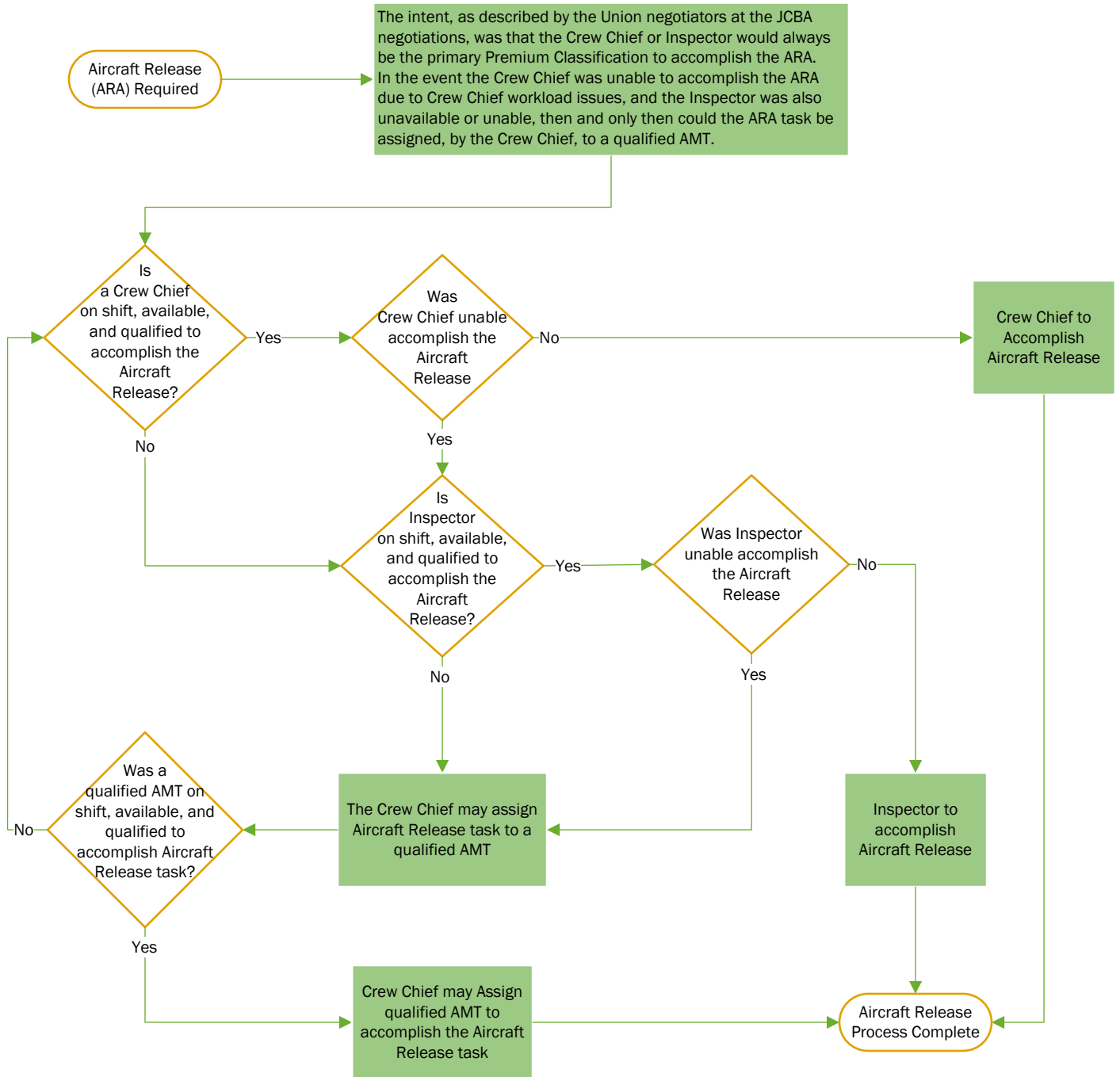


JCBA - Aircraft Release (ARA) Task Decision Tree Guide



Reference Articles:

- 7.F. - Crew Chief shall not lead, direct, or assign a crew of more than 16 employees
- 7.H.1 - Crew Chief shall assign, direct, and approve the work of AMTs
- 7.H.7 - Company will provide legal assistance to Crew Chief for work signed off but not performed by the Crew Chief
- 7.G.8 - Inspector signs Aircraft Release
- 7.H.5 - Crew Chief signs Aircraft Release
- 7.J.2 - AMT may be assigned the Aircraft Release task